

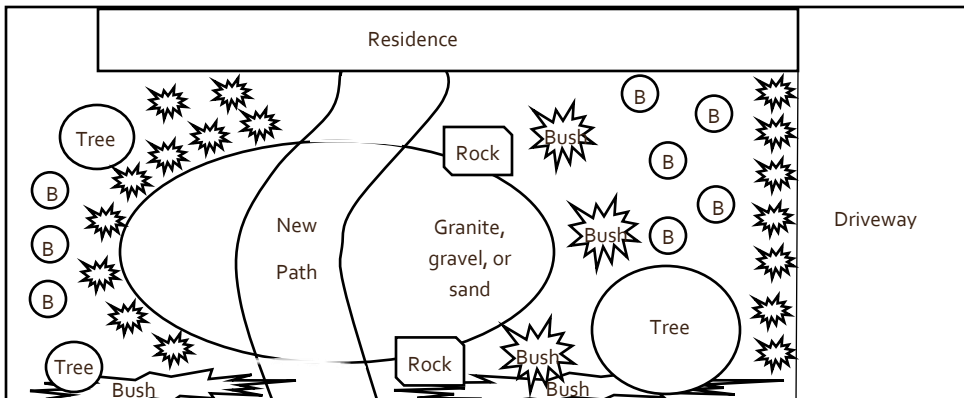


# DROUGHT FRIENDLY LANDSCAPING

## Design

Interested in saving water and changing your yard and parkway into a drought-friendly landscape? It is a fairly easy process to do with the City of San Gabriel. First, you will need to develop a simple landscape design showing the layout of your yard and what you propose to do with it. This can be done by you or a professional landscape designer. The design needs to be on a piece of paper at least 8.5"x11". Indicate where plants, flowers, trees, and materials will go. Remember – no more than 15% of the yard can be non-plant life like rocks, bark, tiles, sand, etc. Vegetation needs to be planted in the soil and not above ground in pots. Submit the design to the Planning Division at City Hall for approval. Please see the landscape design below for a reference.

Visit [www.BeWaterWise.com](http://www.BeWaterWise.com) to learn about getting \$2.00 per square foot of grass removed and replaced with sustainable landscaping.



**SUBMIT LANDSCAPE  
DESIGN TO OUR  
PLANNING DIVISION  
FOR APPROVAL**

**VEGETATION NEEDS  
TO BE PLANTED AND  
NOT IN POTS**

**NO MORE THAN 15%  
OF YARD CAN BE  
NON-PLANT LIFE LIKE  
ROCKS, BARK, SAND,  
ETC.**

**PLANNING  
(626) 308-2806**

**CITY OF SAN GABRIEL**

**NIS DIVISION**

425 S. Mission Drive  
San Gabriel, California 91776

[www.SanGabrielCity.com/NIS](http://www.SanGabrielCity.com/NIS)

(626) 308-2826