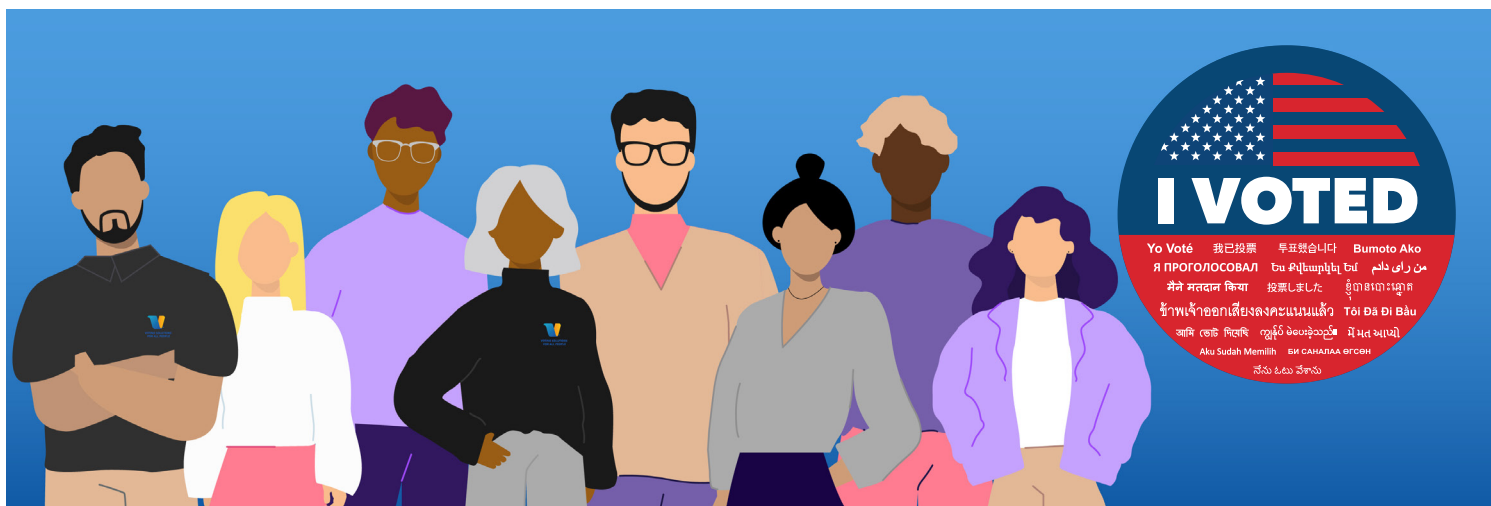




# LOS ANGELES COUNTY REGISTRAR-RECORDER/COUNTY CLERK



## BECOME AN ELECTION WORKER

EARN UP TO \$1,180

Election Workers play an essential role in elections and in our democracy. They are trusted community members who assist the in-person voting experience throughout Los Angeles County.

### RESPONSIBILITIES:

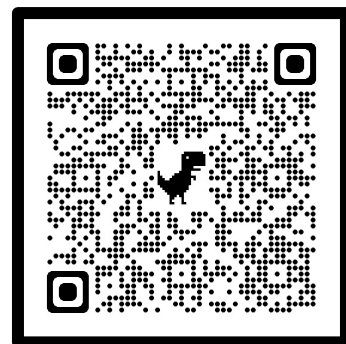
- Attend Election Worker training (Paid)
- Assist with opening/closing the Vote Center
- Assist voters throughout the day
- Serve between 4-10 days

### REQUIREMENTS:

- Provide proof vaccination against COVID-19
- A U.S. citizen and registered to vote in California OR a Legal Permanent Resident
- 18 years of age or older (unless participating in the Student Election Worker Program)

### YOU CAN BECOME AN ELECTION WORKER BY:

1. Going to: [LAVOTE.GOV/electionworker](http://LAVOTE.GOV/electionworker)
2. Scan the QR Code
3. Call (800) 815-2666, Option 7



**BILINGUAL SPEAKERS  
ALWAYS NEEDED!**



Disclaimer: Election Workers must comply with legal restrictions imposed upon them including, but not limited to, restraining orders, restrictions imposed on registered sex offenders, or any other prohibitions or limitations on their presence at voting locations and must notify the County immediately if they are prohibited from serving at their assigned voting location. Elections Workers are subject to all applicable public health orders, mandates, statutes, rules, regulations, protocols, policies and procedures required by Federal, state, and local authorities, or by the Registrar-Recorder/County Clerk relating to COVID-19. This includes, but is not limited to, requiring applicants to provide proof of the COVID-19 vaccination. If you need Election Worker assistance, call (800) 815-2666, option 7.